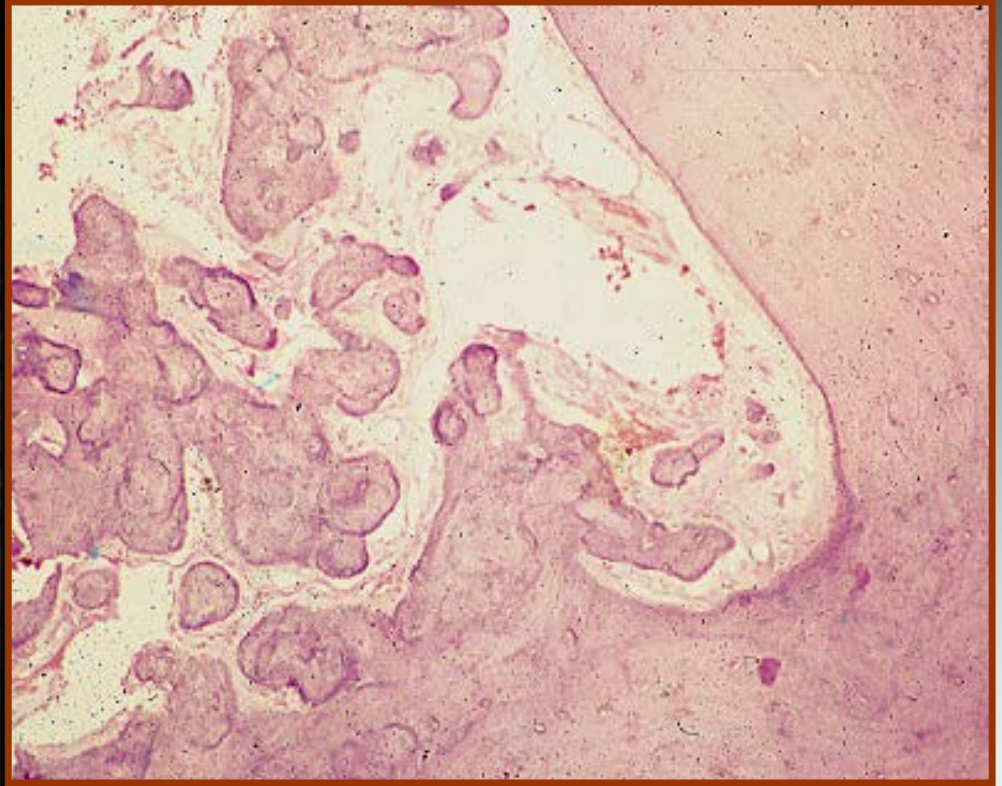


Focal Periapical Opacities

- Focal Osteosclerosis (Bone Scar)
- Focal Sclerosing Osteomyelitis
- Periapical Cemental Dysplasia
- Benign Cementoblastoma
- Superimposed Soft Tissue Lesions

Focal Osteosclerosis

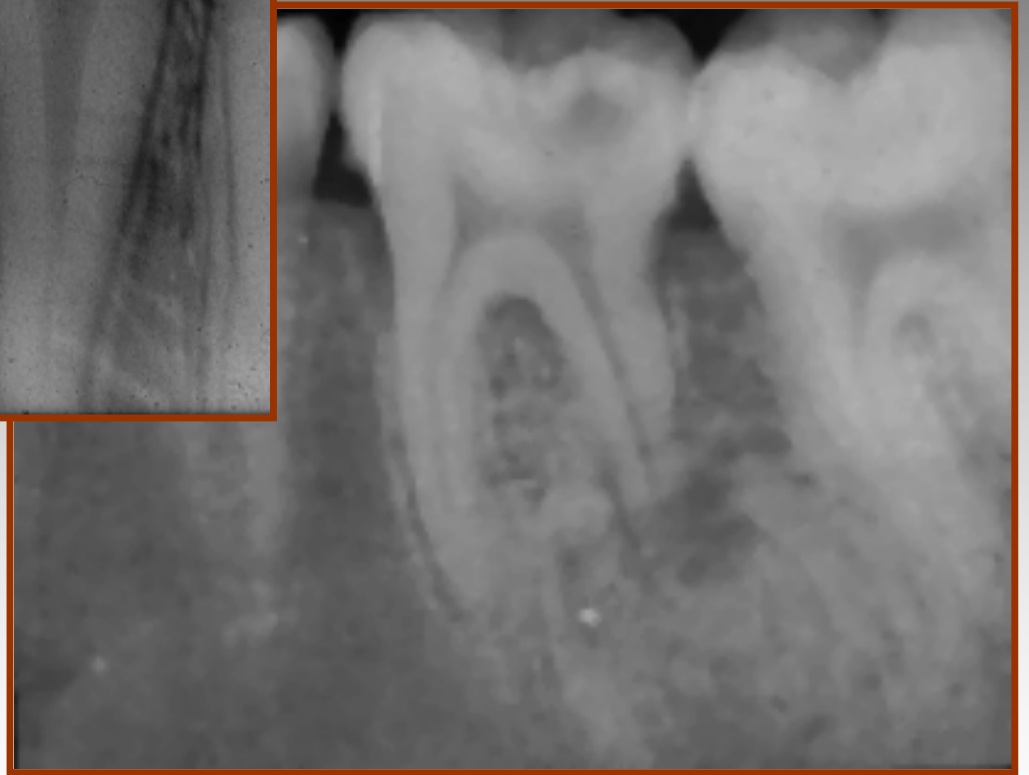
- Apices of posterior teeth
- Teeth test vital
- Opacity is often irregular in outline
- Nonexpansile



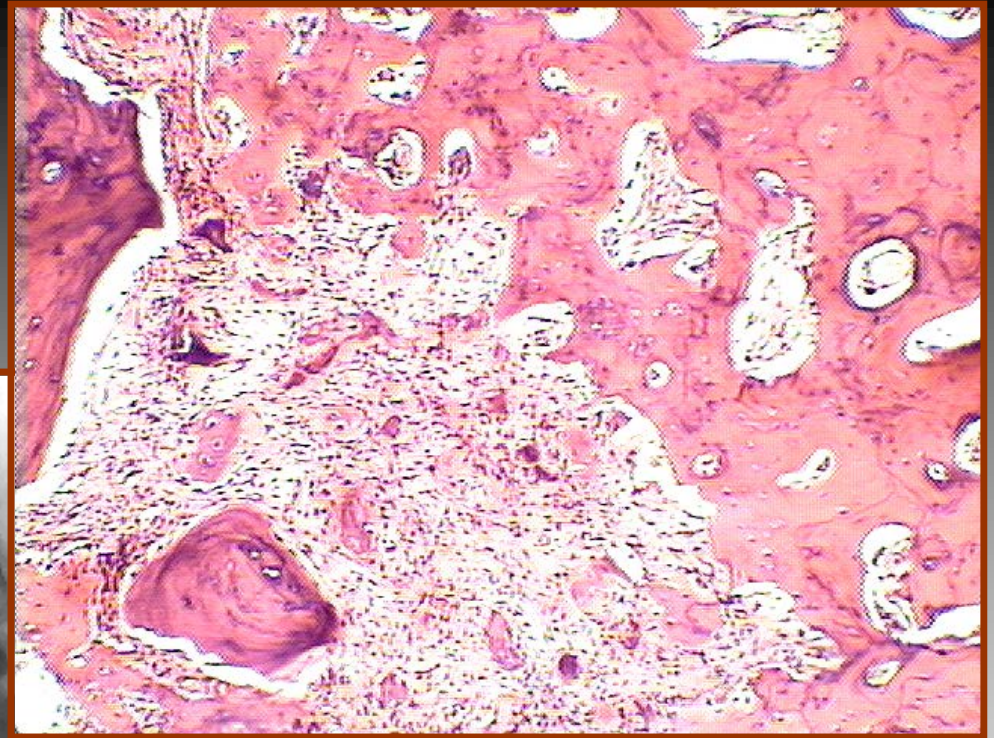
Focal Osteosclerosis

Focal Sclerosing Osteomyelitis

- Condensing Osteitis
- Teens, young adults
- Posterior teeth, molars
- Teeth test vital
- Deep caries/restoration
- Nonexpansile



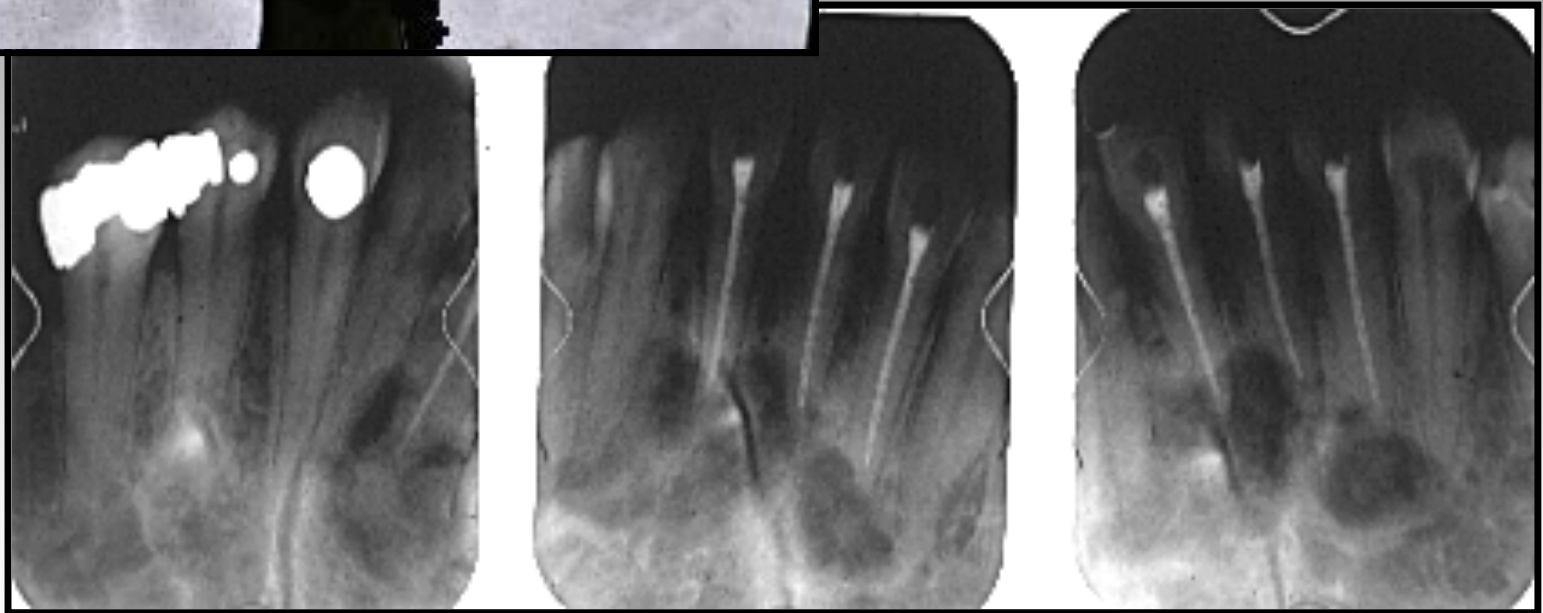
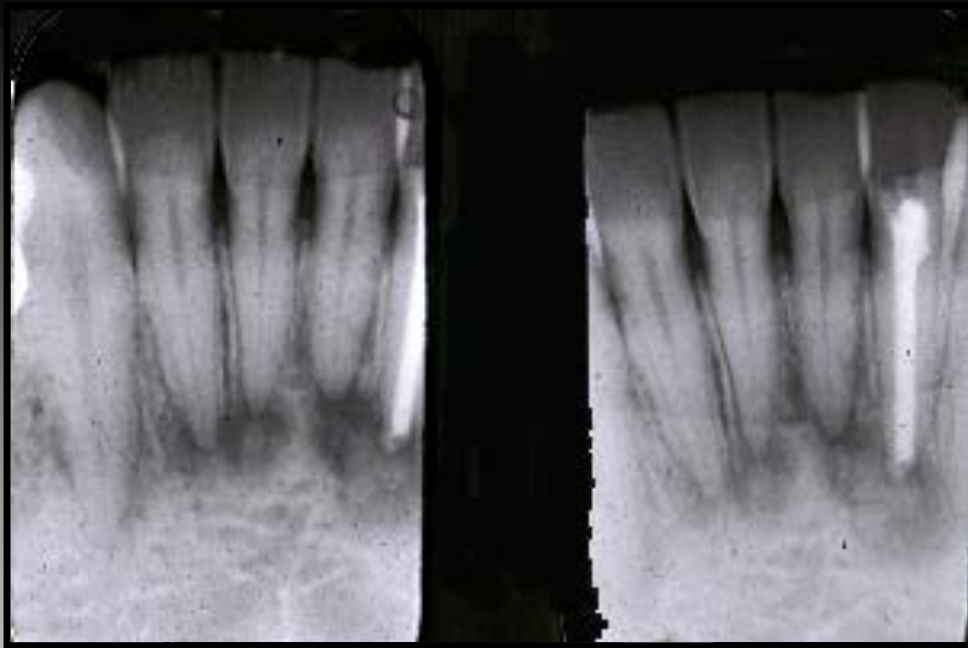
Focal Sclerosing Osteomyelitis



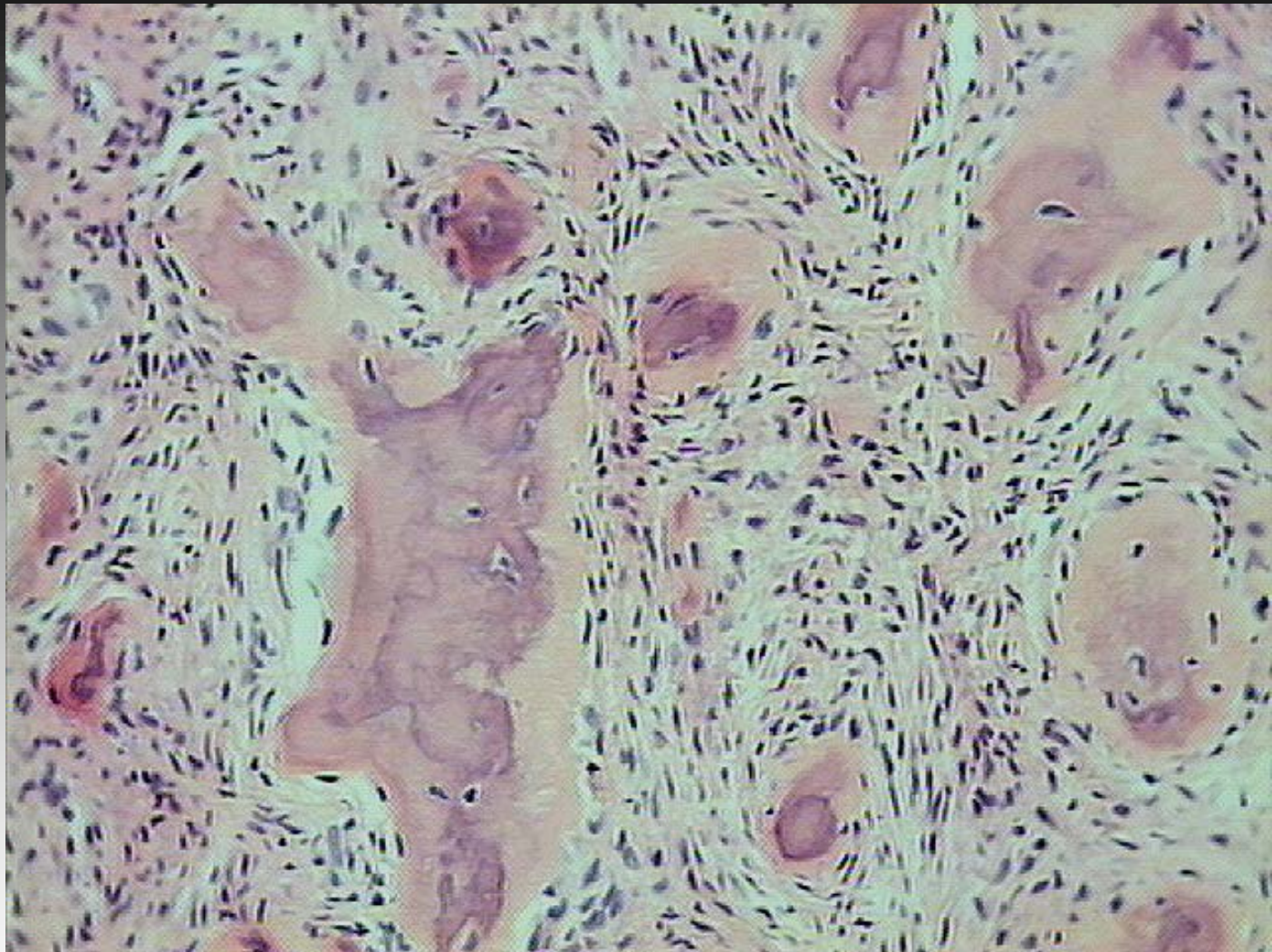
Focal Sclerosing Osteomyelitis

Periapical Cemental Dysplasia

- Apices of anterior teeth
- Adult black females
- Teeth test vital
- Opacity surrounded by lucent halo
- Nonexpansile



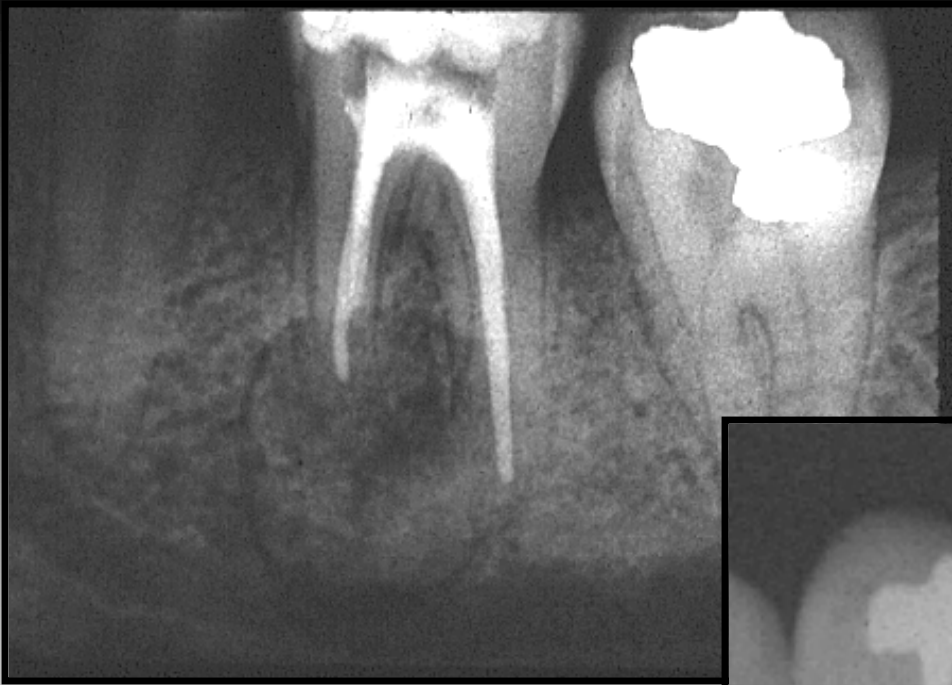
Periapical Cemental Dysplasia



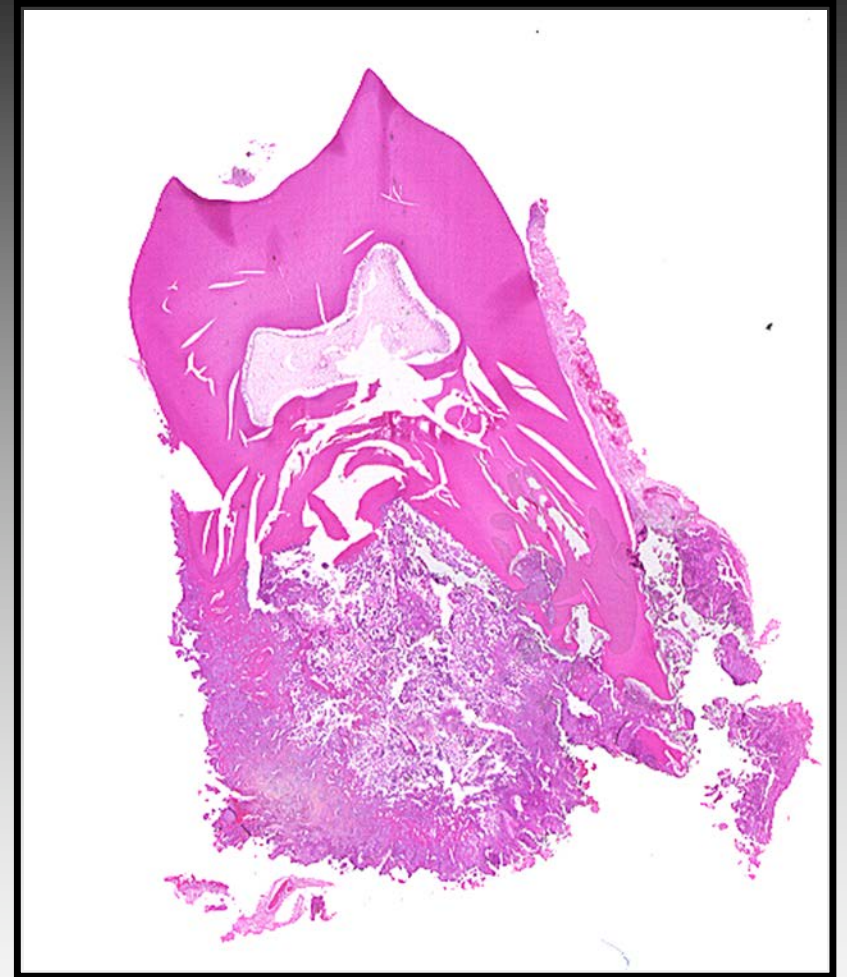
Periapical Cemental Dysplasia

Benign Cementoblastoma

- Apices of posterior teeth
- Teeth test vital
- Opacity is fused to and envelops root
- Expansile
- Sounds ankylosed



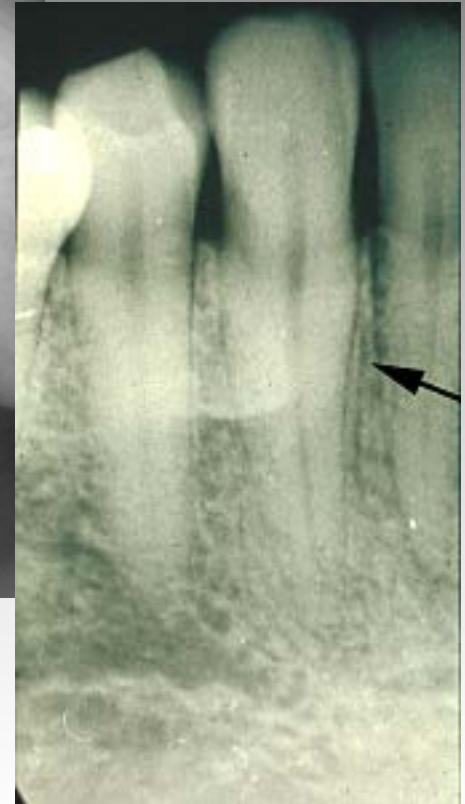
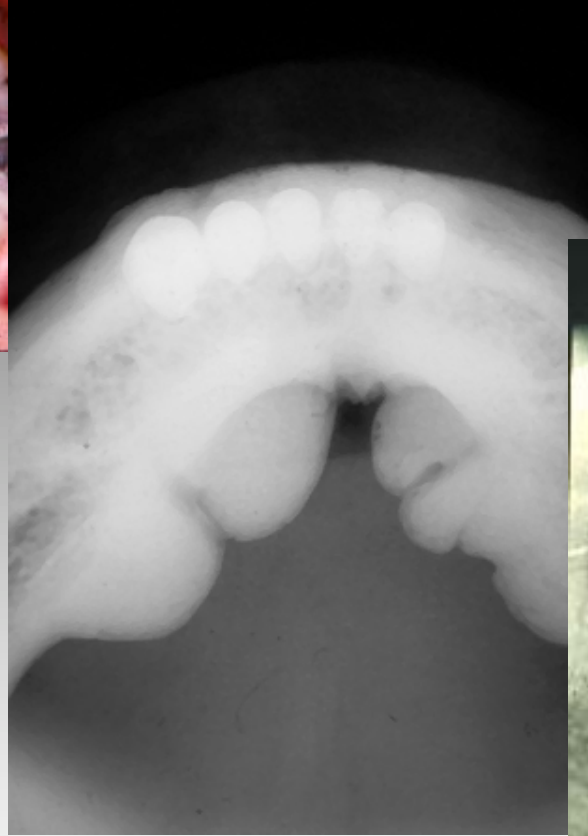
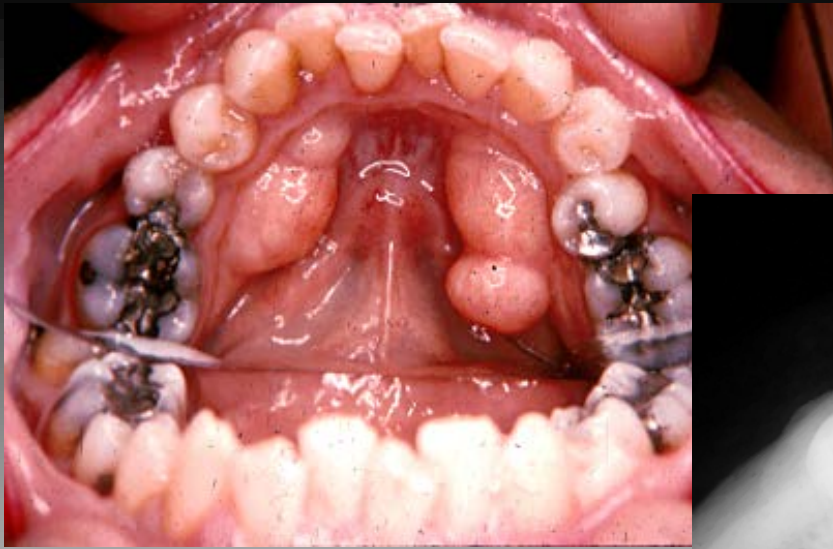
Benign Cementoblastoma



Benign Cementoblastoma

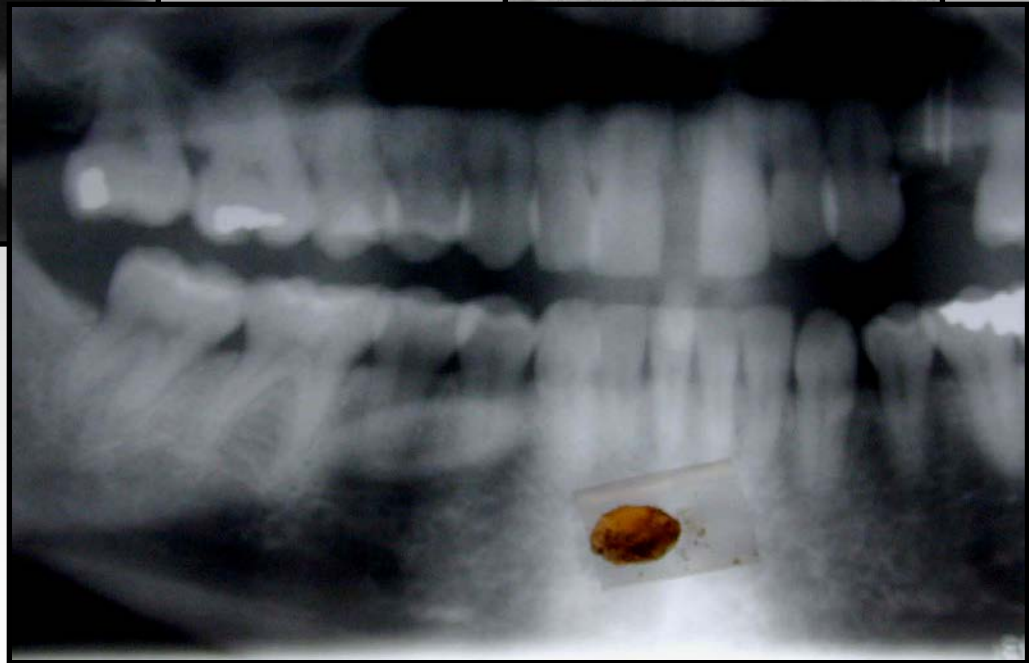
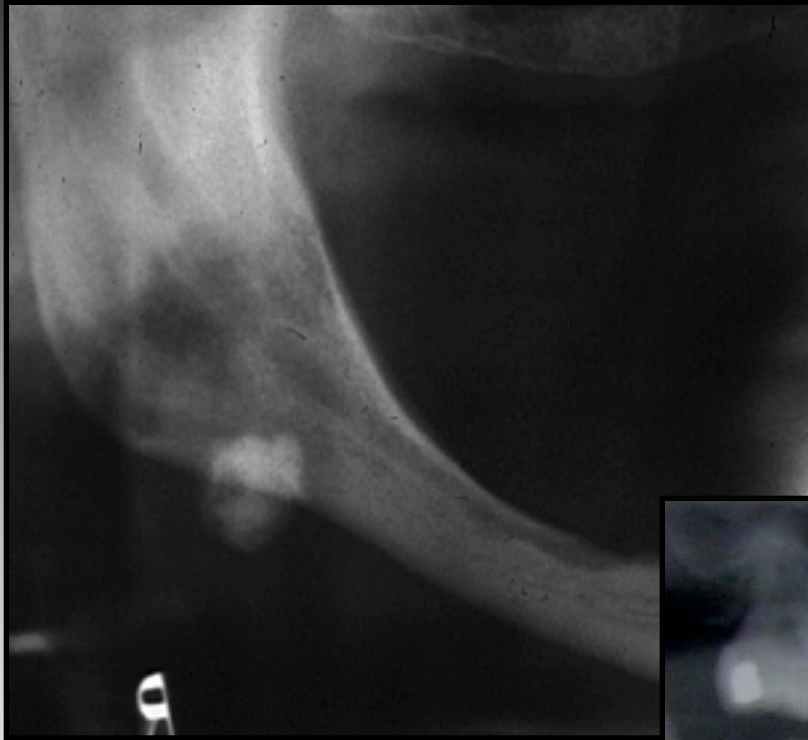
Superimposed Lesions

- Tori
- Exostoses
- Sialoliths
- Phleboliths
- Foreign bodies
- Order additional films
 - Occlusal, AP, Submental
 - Note object movement with various angles of radiograph tube



Exostoses

Sialolith



Phleboliths, Tongue Base Hemangioma

